



Building homes that fit your lifestyle



## 148 Hinge Path

Community: Gatewood

Square Feet: 2,123

Levels: 2-Story

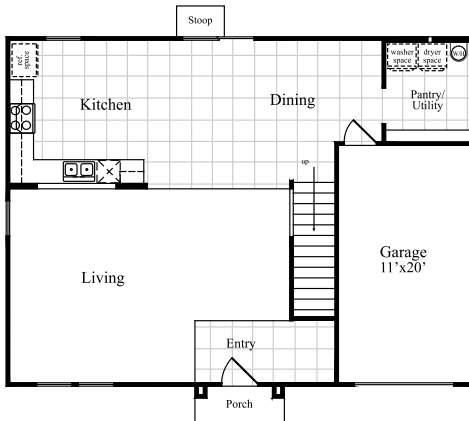
Bed Rooms: 3

Bath Rooms: 2.5

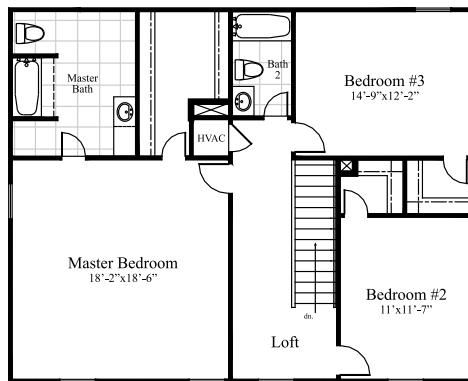
Garage: 11'x20'

Price: **\$145,430**

★ Special pricing on this home for a limited time only!



First Floor - Peninsula Kitchen



Second Floor - Three Bedrooms with Loft

Standard floor plan shown on flyer. Actual home may have additional options not shown here.

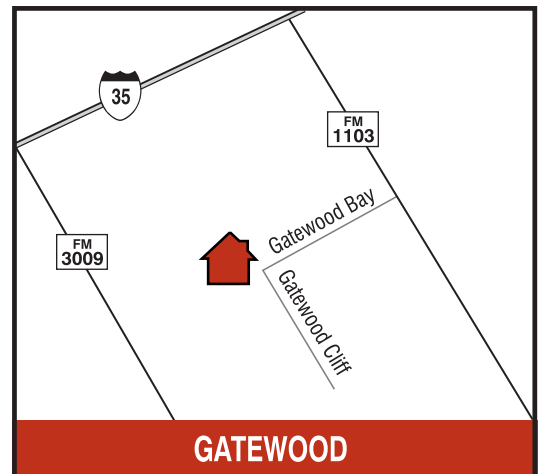
### Directions:

Take IH-35 North. Exit FM 1103 and turn right (East). Right on Gatewood Bay.

### Contact Info:

125 Gatewood Cliff  
Cibolo, TX 78108

**210-566-6222**



Square footage and dimensions are by architectural design and will vary by actual construction. Plans, specifications, and pricing subject to change without notice. Colors and final appearance may differ from this artist's rendition. Artist's rendition does not show true height of wainscot. See sales counselor for actual elevation.



[www.fieldstone-homes-sa.com](http://www.fieldstone-homes-sa.com)

