



Building homes that fit your lifestyle



1540 Cap Stone Ridge

Community: Caprock

Square Feet: 2140

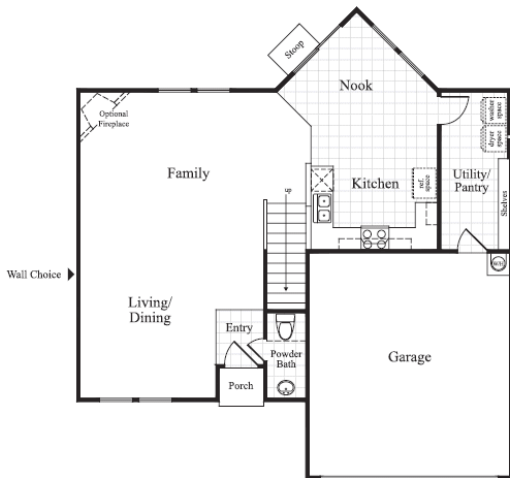
Levels: 2-Story

Bed Rooms: 3

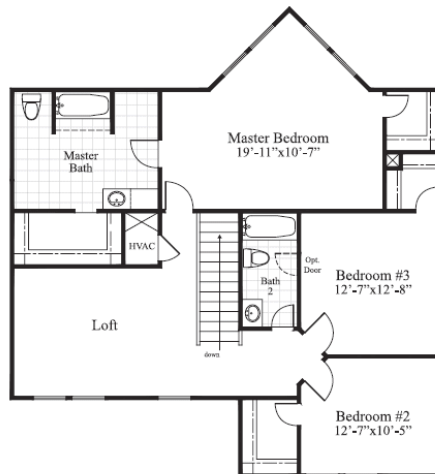
Bath Rooms: 2.5

Call or stop by the model home to view this home!

★ Special pricing on this home for a limited time only!



First Floor - Peninsula Kitchen



Second Floor - Three Bedrooms

Standard floor plan shown on flyer. Actual home may have additional options not shown here.

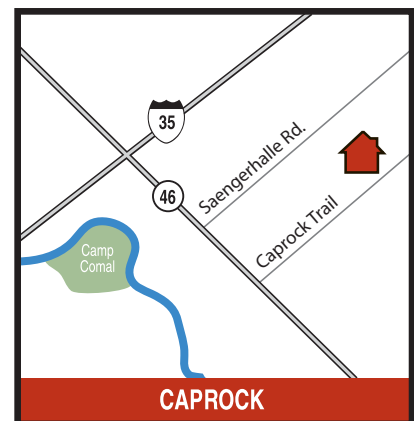
Directions:

Take IH-35 North to New Braunfels. Exit right (East) on Hwy 46. Left on Cap Rock Trail.

Contact Info:

1435 Cap Ridge Peak
New Braunfels, Tx. 78130

830.626.2240



Square footage and dimensions are by architectural design and will vary by actual construction. Plans, specifications, and pricing subject to change without notice. Colors and final appearance may differ from this artist's rendition. Artist's rendition does not show true height of wainscot. See sales counselor for actual elevation.



www.fieldstone-homes.com

