



**1221 W 1100 S #135,
CLEARFIELD, UT
84015**

**SINGLE FAMILY
CALL FOR PRICE**

Sq ft: 2,527
Beds: 4
Bath: 3.5

ABOUT THIS HOME

INCENTIVE:

CLOSING COSTS OR 2-1 BUYDOWN FOR LIMITED TIME ONLY

INCLUDED FEATURES:

RV Pad - 12 Foot Wide

Finished Basement

Loft In The Upstairs

Corner Lot

5x3 Kitchen Island

Whirlpool Fingerprint Resistant Gas Kitchen Appliances

Quartz Countertops In Kitchen

72" Double Sink Vanity In Master Bath

60x30 Walk-In Shower In Master Bath

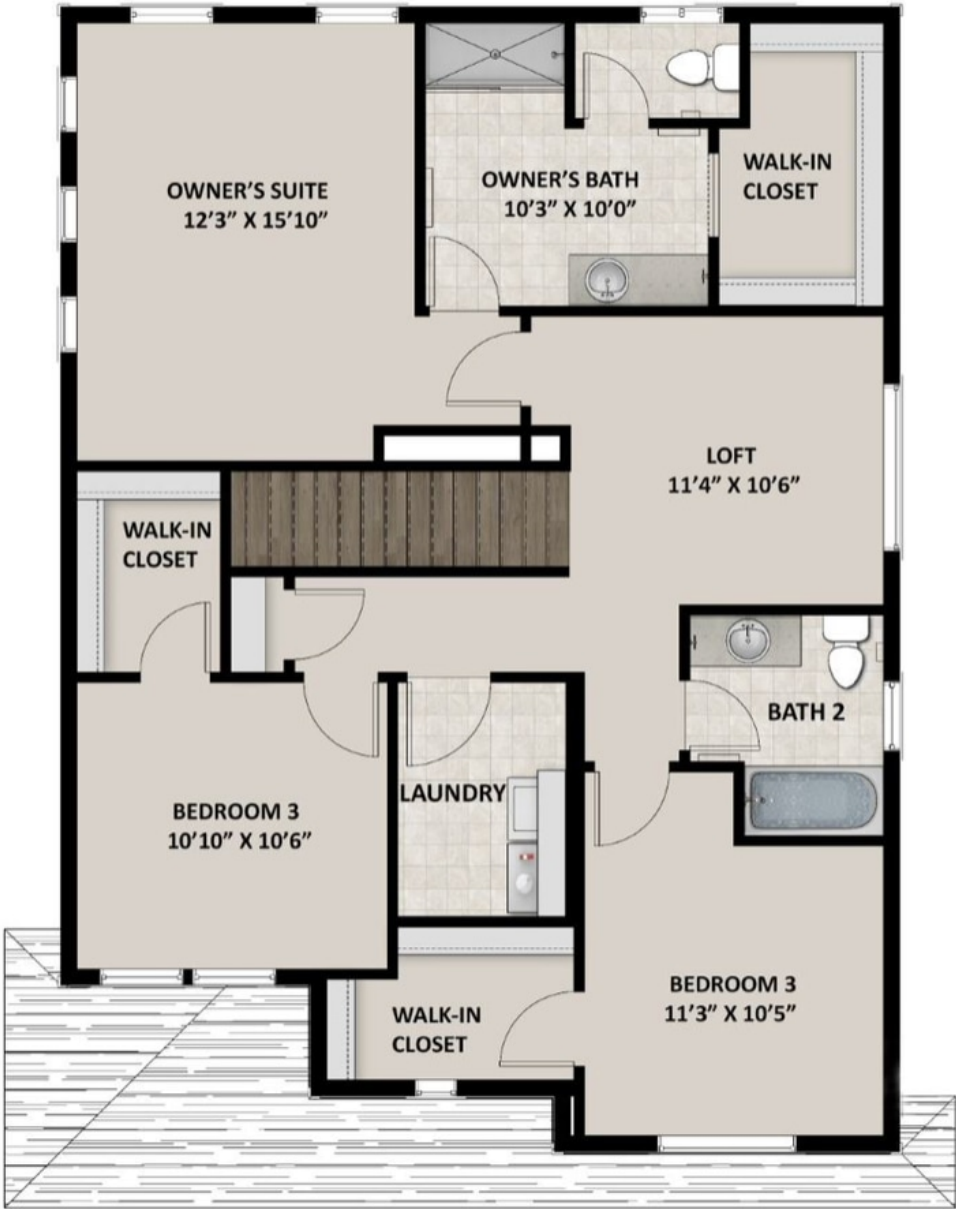
The Bordeaux showcases a contemporary design with 3 bedrooms, 2.5 bathrooms, 1,852 finished square feet, and 2,527 total square feet. Walk inside to find a spacious closet in the entry, powder room off the hallway, and an expansive family room, dining room, and kitchen.

FLOOR PLAN



Pricing, features and availability are subject to change without notice. Fieldstone Homes makes reasonable efforts to provide accurate information, however, no warranties or representations are made as to its accuracy and Fieldstone Homes assumes no liability or responsibility for any errors in pricing or content. All pricing information, including promotions and incentives, must be verified by an authorized representative for the appropriate community and home. Photography, floor plans, elevations, renderings, virtual tours, maps, square footage and dimensions are approximate and for illustration purposes only, and will vary from the homes as built and are subject to change without notice. Homes in each neighborhood may be owned and sold by a separate limited liability company (LLC) or other corporate entity.

FLOOR PLAN



Pricing, features and availability are subject to change without notice. Fieldstone Homes makes reasonable efforts to provide accurate information, however, no warranties or representations are made as to its accuracy and Fieldstone Homes assumes no liability or responsibility for any errors in pricing or content. All pricing information, including promotions and incentives, must be verified by an authorized representative for the appropriate community and home. Photography, floor plans, elevations, renderings, virtual tours, maps, square footage and dimensions are approximate and for illustration purposes only, and will vary from the homes as built and are subject to change without notice. Homes in each neighborhood may be owned and sold by a separate limited liability company (LLC) or other corporate entity.

FLOOR PLAN



Pricing, features and availability are subject to change without notice. Fieldstone Homes makes reasonable efforts to provide accurate information, however, no warranties or representations are made as to its accuracy and Fieldstone Homes assumes no liability or responsibility for any errors in pricing or content. All pricing information, including promotions and incentives, must be verified by an authorized representative for the appropriate community and home. Photography, floor plans, elevations, renderings, virtual tours, maps, square footage and dimensions are approximate and for illustration purposes only, and will vary from the homes as built and are subject to change without notice. Homes in each neighborhood may be owned and sold by a separate limited liability company (LLC) or other corporate entity.