



## ADRIAN CRAFTSMAN

### TWINHOUSE

Sq ft: 2,659

Beds: 3

Bath: 2.5

## ABOUT THIS HOME

You will love the Adrian floor plan! The wide entry leads you into a spacious main living space with a two-story great room, dining space, and kitchen, as well as a walk-in pantry, mudroom, and powder bath. Upstairs you'll find a gorgeous owner's suite and 2 additional bedrooms, each with their own walk-in closet. You will also have a laundry room and secondary bathroom. You have the option to finish the basement for even more space with a recreation room and additional bedroom and bathroom.

FLOOR PLAN



MAIN LEVEL

Pricing, features and availability are subject to change without notice. Fieldstone Homes makes reasonable efforts to provide accurate information, however, no warranties or representations are made as to its accuracy and Fieldstone Homes assumes no liability or responsibility for any errors in pricing or content. All pricing information, including promotions and incentives, must be verified by an authorized representative for the appropriate community and home. Photography, floor plans, elevations, renderings, virtual tours, maps, square footage and dimensions are approximate and for illustration purposes only, and will vary from the homes as built and are subject to change without notice. Homes in each neighborhood may be owned and sold by a separate limited liability company (LLC) or other corporate entity.

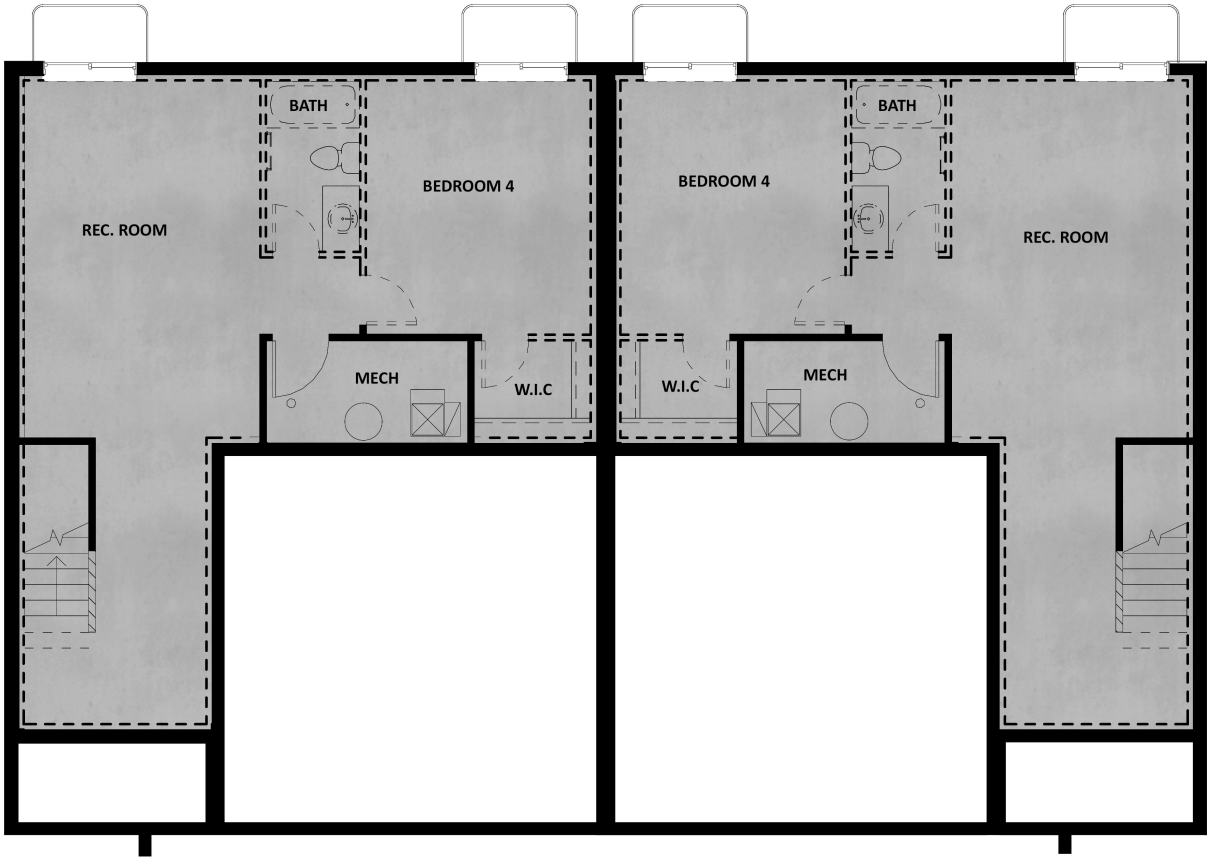
FLOOR PLAN



UPPER LEVEL

Pricing, features and availability are subject to change without notice. Fieldstone Homes makes reasonable efforts to provide accurate information, however, no warranties or representations are made as to its accuracy and Fieldstone Homes assumes no liability or responsibility for any errors in pricing or content. All pricing information, including promotions and incentives, must be verified by an authorized representative for the appropriate community and home. Photography, floor plans, elevations, renderings, virtual tours, maps, square footage and dimensions are approximate and for illustration purposes only, and will vary from the homes as built and are subject to change without notice. Homes in each neighborhood may be owned and sold by a separate limited liability company (LLC) or other corporate entity.

FLOOR PLAN



UNFINISHED BASEMENT LEVEL

Pricing, features and availability are subject to change without notice. Fieldstone Homes makes reasonable efforts to provide accurate information, however, no warranties or representations are made as to its accuracy and Fieldstone Homes assumes no liability or responsibility for any errors in pricing or content. All pricing information, including promotions and incentives, must be verified by an authorized representative for the appropriate community and home. Photography, floor plans, elevations, renderings, virtual tours, maps, square footage and dimensions are approximate and for illustration purposes only, and will vary from the homes as built and are subject to change without notice. Homes in each neighborhood may be owned and sold by a separate limited liability company (LLC) or other corporate entity.