



**6727 W MEADOW
GRASS DR. #390,
SOUTH JORDAN, UT
84009**

SINGLE FAMILY

CALL FOR PRICE

Sq ft: 3,283

Beds: 3

Bath: 2.5

ABOUT THIS HOME

INCENTIVE: Closing Costs OR 2-1 Buydown

\$211,705 Included Options

INCLUDED FEATURES:

Fully Furnished

Corner Lot Landscaping

Enlarged Front Porch

Tray Ceiling In Master Bedroom

32" Interior Fireplace

Corner Lot Fencing

Upgraded Cabinets Throughout

Built In Desk In Loft

Stainless Steel Gas Kitchen Appliances

Waterfall Island In Kitchen

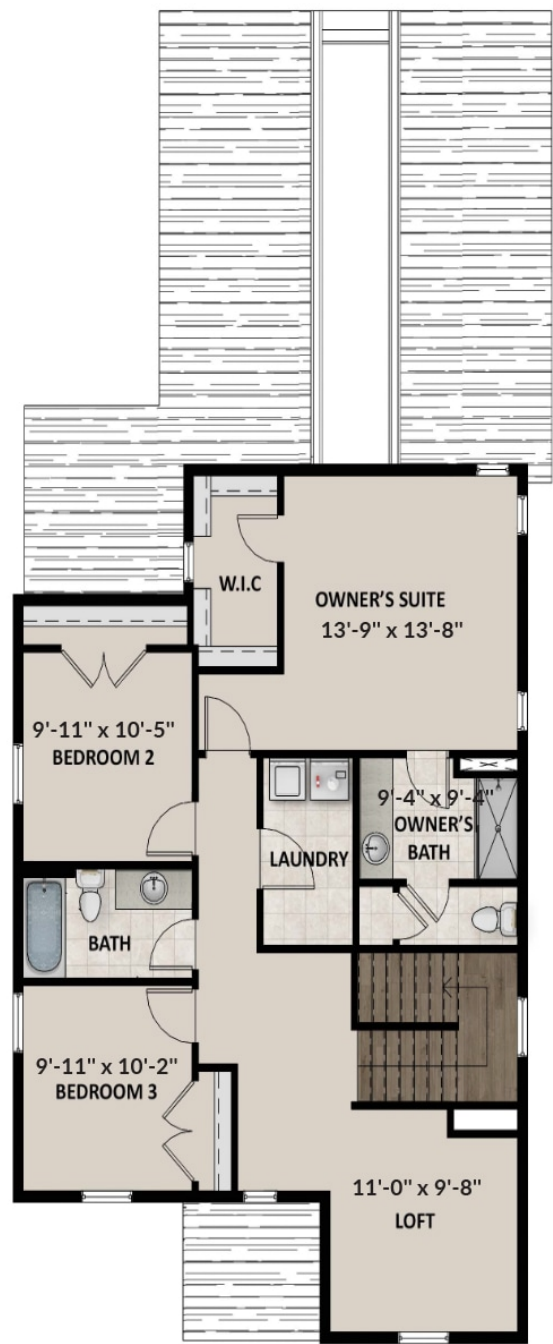
FLOOR PLAN



MAIN LEVEL

Pricing, features and availability are subject to change without notice. Fieldstone Homes makes reasonable efforts to provide accurate information, however, no warranties or representations are made as to its accuracy and Fieldstone Homes assumes no liability or responsibility for any errors in pricing or content. All pricing information, including promotions and incentives, must be verified by an authorized representative for the appropriate community and home. Photography, floor plans, elevations, renderings, virtual tours, maps, square footage and dimensions are approximate and for illustration purposes only, and will vary from the homes as built and are subject to change without notice. Homes in each neighborhood may be owned and sold by a separate limited liability company (LLC) or other corporate entity.

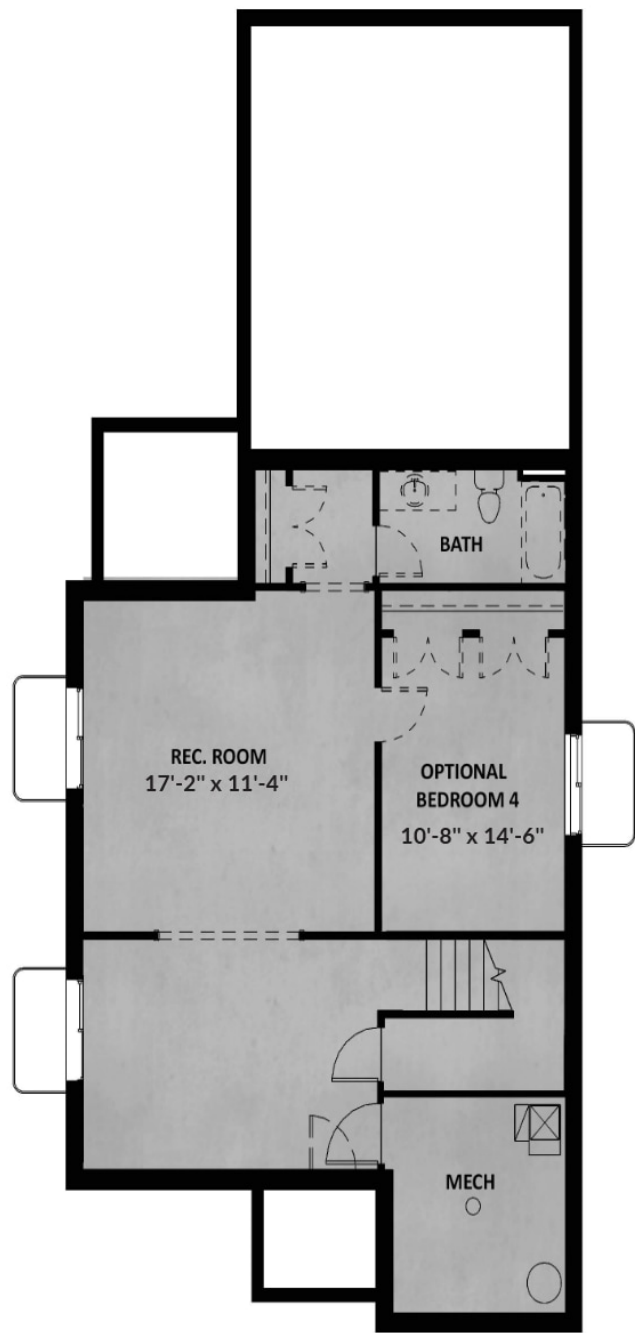
FLOOR PLAN



UPPER LEVEL

Pricing, features and availability are subject to change without notice. Fieldstone Homes makes reasonable efforts to provide accurate information, however, no warranties or representations are made as to its accuracy and Fieldstone Homes assumes no liability or responsibility for any errors in pricing or content. All pricing information, including promotions and incentives, must be verified by an authorized representative for the appropriate community and home. Photography, floor plans, elevations, renderings, virtual tours, maps, square footage and dimensions are approximate and for illustration purposes only, and will vary from the homes as built and are subject to change without notice. Homes in each neighborhood may be owned and sold by a separate limited liability company (LLC) or other corporate entity.

FLOOR PLAN



UNFINISHED BASEMENT

Pricing, features and availability are subject to change without notice. Fieldstone Homes makes reasonable efforts to provide accurate information, however, no warranties or representations are made as to its accuracy and Fieldstone Homes assumes no liability or responsibility for any errors in pricing or content. All pricing information, including promotions and incentives, must be verified by an authorized representative for the appropriate community and home. Photography, floor plans, elevations, renderings, virtual tours, maps, square footage and dimensions are approximate and for illustration purposes only, and will vary from the homes as built and are subject to change without notice. Homes in each neighborhood may be owned and sold by a separate limited liability company (LLC) or other corporate entity.