



## ASHTON VICTORIAN FARMHOUSE

SINGLE FAMILY

Sq ft: 3,274

Beds: 3

Bath: 2.5

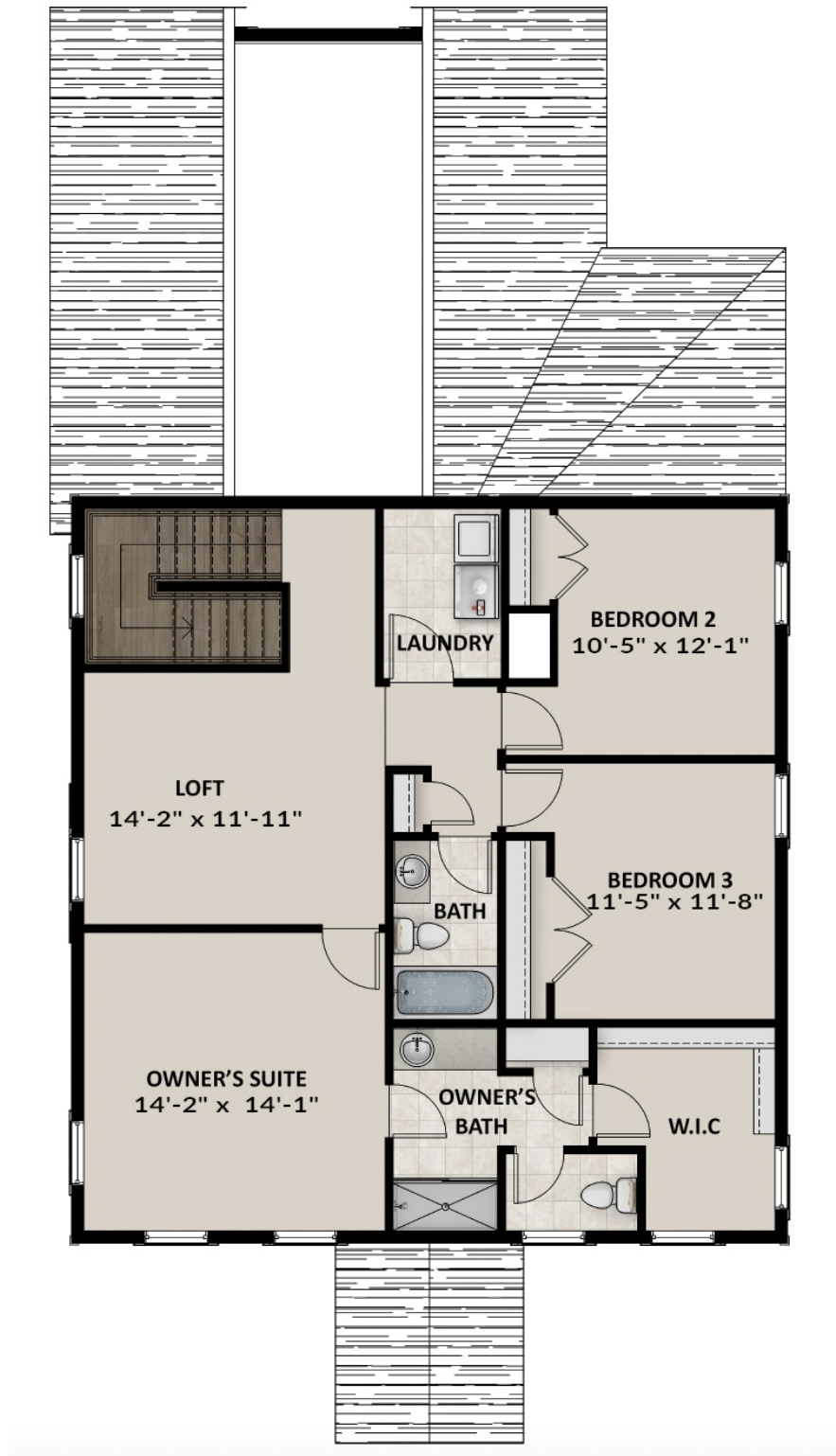
## ABOUT THIS HOME

The amount of room in this new open floorplan, the Ashton, is exactly what you need to help you entertain family and friends. You can find a flex room, living and dining area all easily accessible from one another. The corner walk-in pantry is a perfect addition to a beautiful kitchen. Upstairs you'll find a gorgeous owner's suite with a private bathroom. Every morning, you'll wake up thinking you are at a resort. There are two additional bedrooms upstairs with a laundry room. The unique design brings light into the home that flows. Enjoy the experience of living in a dream home that has lots of space to grow. Downstairs, if you choose to finish the basement, is an amazing recreation room, and the option for an extra bedroom and bathroom. You will want to be calling the Ashton floorplan, your next home.

## FLOOR PLAN



## FLOOR PLAN



## FLOOR PLAN

