



**1147 SOUTH 1275
WEST #102,
CLEARFIELD, UT
84015**

**SINGLE FAMILY
CALL FOR PRICE**

Sq ft: 2,747

Beds: 3

Bath: 2.5

ABOUT THIS HOME

INCENTIVE: Closing Costs OR 2-1 Buydown

Included Features:

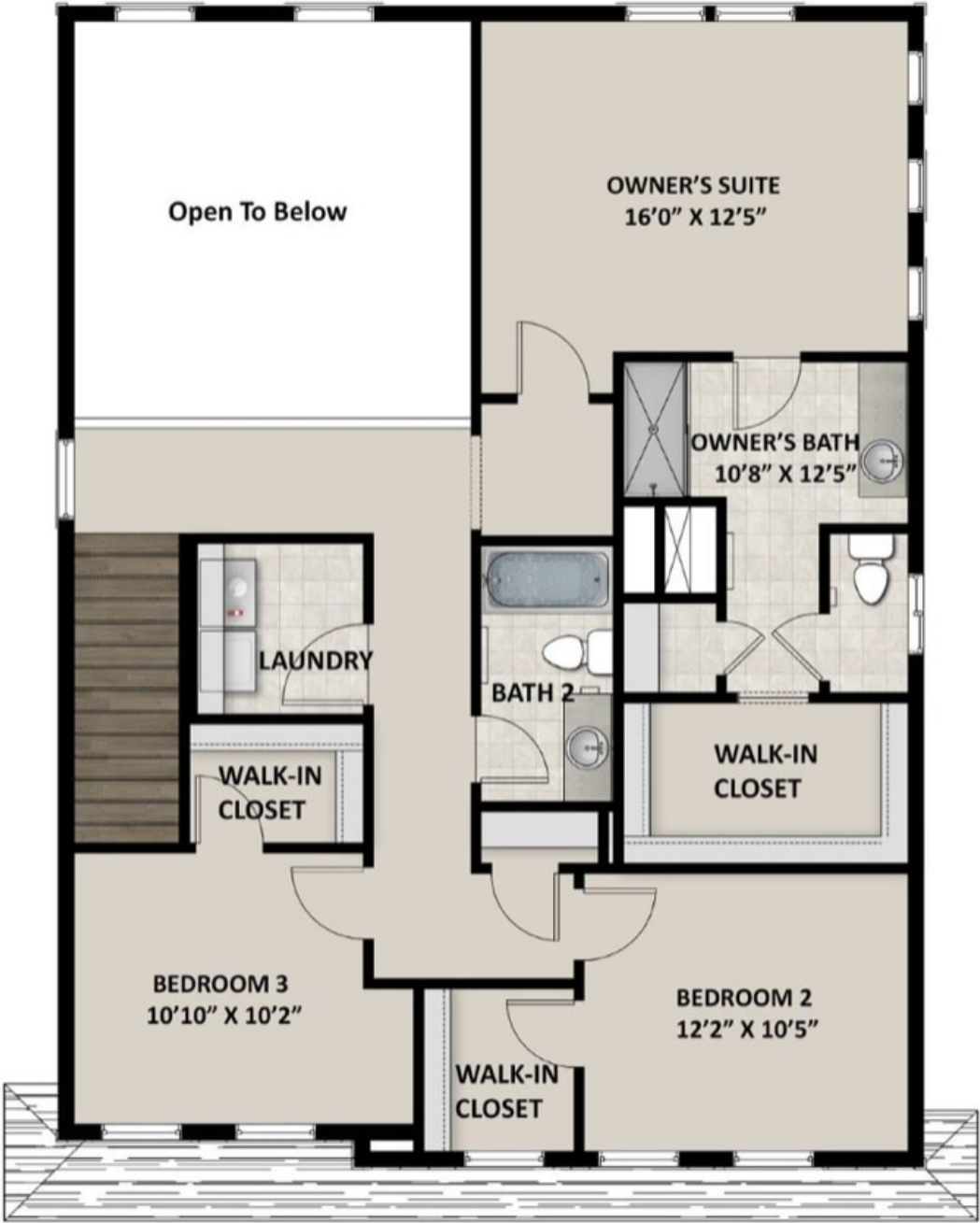
- Craftsman Exterior Elevation with Stone and James Hardie Siding
- 3rd Car Garage
- Corner Lot Landscaping
- 8' Front Entry Door
- Upgraded Cabinets Throughout
- Whirlpool Stainless Steel Gas Kitchen Appliances
- Quartz Countertops Throughout
- Upgraded Flooring Throughout
- 60x30 Walk-in Shower in Owner's Suite
- Metal Interior Railing
- Upgraded Lighting Throughout

FLOOR PLAN



Pricing, features and availability are subject to change without notice. Fieldstone Homes makes reasonable efforts to provide accurate information, however, no warranties or representations are made as to its accuracy and Fieldstone Homes assumes no liability or responsibility for any errors in pricing or content. All pricing information, including promotions and incentives, must be verified by an authorized representative for the appropriate community and home. Photography, floor plans, elevations, renderings, virtual tours, maps, square footage and dimensions are approximate and for illustration purposes only, and will vary from the homes as built and are subject to change without notice. Homes in each neighborhood may be owned and sold by a separate limited liability company (LLC) or other corporate entity.

FLOOR PLAN



Pricing, features and availability are subject to change without notice. Fieldstone Homes makes reasonable efforts to provide accurate information, however, no warranties or representations are made as to its accuracy and Fieldstone Homes assumes no liability or responsibility for any errors in pricing or content. All pricing information, including promotions and incentives, must be verified by an authorized representative for the appropriate community and home. Photography, floor plans, elevations, renderings, virtual tours, maps, square footage and dimensions are approximate and for illustration purposes only, and will vary from the homes as built and are subject to change without notice. Homes in each neighborhood may be owned and sold by a separate limited liability company (LLC) or other corporate entity.

FLOOR PLAN

