



**3710 N EAGLE
MEADOWS DRIVE,
EAGLE MOUNTAIN,
UT 84005**

SINGLE FAMILY

CALL FOR PRICE

Sq ft: 2,747

Beds: 4

Bath: 3.5

ABOUT THIS HOME

Our Model Home is currently under construction, please visit our trailer for more information about the community today!

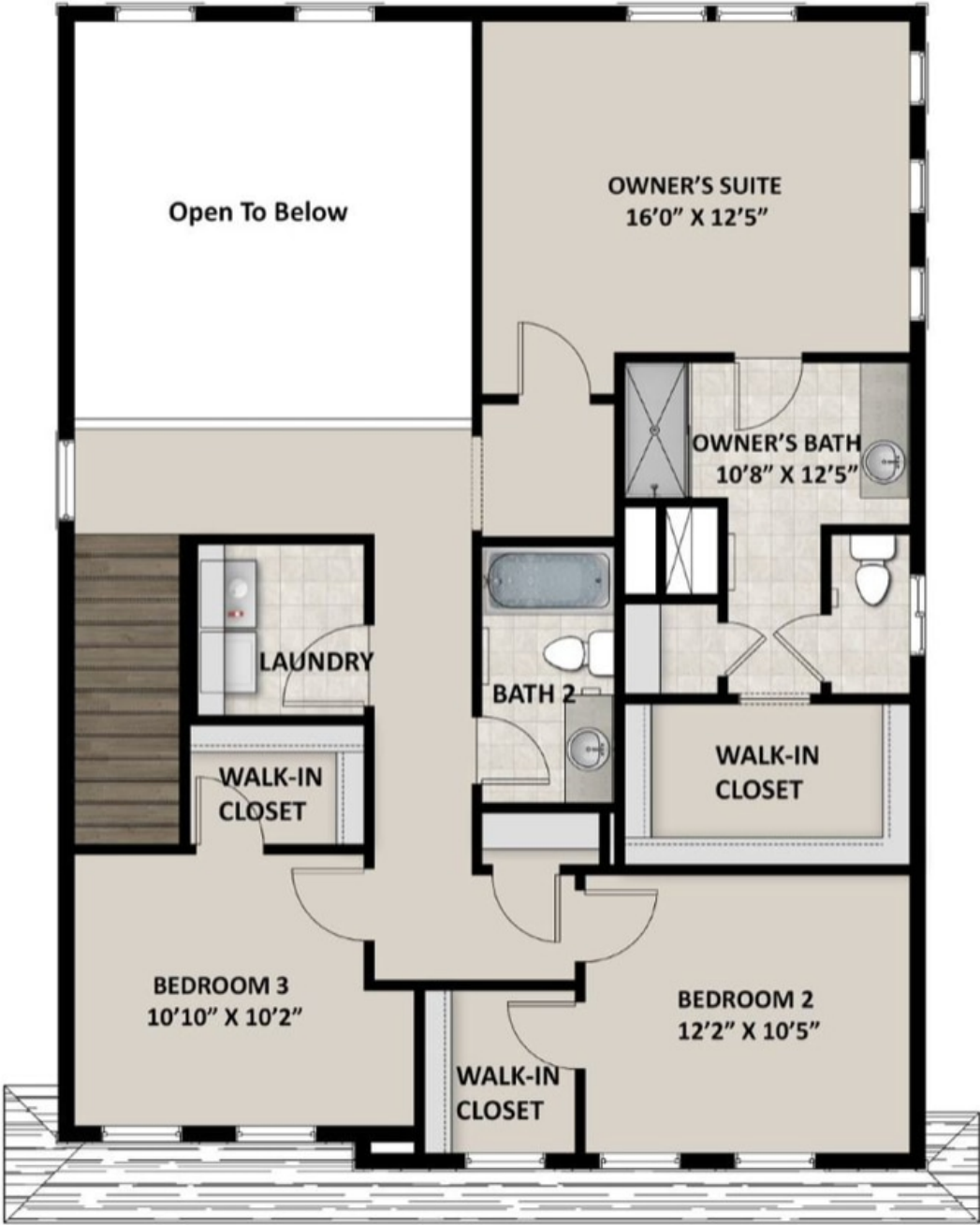
Our Sweetwater floor plan offers up modern features and layout for you and your family to enjoy! Walk inside to discover a main living space with 9' ceilings and an open-to-below great room. In the kitchen, you'll find staggered or 42" upper kitchen cabinets, and a large island for a stylish and functional kitchen. The owner's bath includes a spacious fiberglass walk-in shower for a spa-like bathroom. The Sweetwater model includes 4 bedrooms, 3.5 bathrooms, and 2,747 total square feet.

FLOOR PLAN



Pricing, features and availability are subject to change without notice. Fieldstone Homes makes reasonable efforts to provide accurate information, however, no warranties or representations are made as to its accuracy and Fieldstone Homes assumes no liability or responsibility for any errors in pricing or content. All pricing information, including promotions and incentives, must be verified by an authorized representative for the appropriate community and home. Photography, floor plans, elevations, renderings, virtual tours, maps, square footage and dimensions are approximate and for illustration purposes only, and will vary from the homes as built and are subject to change without notice. Homes in each neighborhood may be owned and sold by a separate limited liability company (LLC) or other corporate entity.

FLOOR PLAN



Pricing, features and availability are subject to change without notice. Fieldstone Homes makes reasonable efforts to provide accurate information, however, no warranties or representations are made as to its accuracy and Fieldstone Homes assumes no liability or responsibility for any errors in pricing or content. All pricing information, including promotions and incentives, must be verified by an authorized representative for the appropriate community and home. Photography, floor plans, elevations, renderings, virtual tours, maps, square footage and dimensions are approximate and for illustration purposes only, and will vary from the homes as built and are subject to change without notice. Homes in each neighborhood may be owned and sold by a separate limited liability company (LLC) or other corporate entity.

FLOOR PLAN



Pricing, features and availability are subject to change without notice. Fieldstone Homes makes reasonable efforts to provide accurate information, however, no warranties or representations are made as to its accuracy and Fieldstone Homes assumes no liability or responsibility for any errors in pricing or content. All pricing information, including promotions and incentives, must be verified by an authorized representative for the appropriate community and home. Photography, floor plans, elevations, renderings, virtual tours, maps, square footage and dimensions are approximate and for illustration purposes only, and will vary from the homes as built and are subject to change without notice. Homes in each neighborhood may be owned and sold by a separate limited liability company (LLC) or other corporate entity.